



T-21C

CORDLESS DUAL ACTION POLISHER™

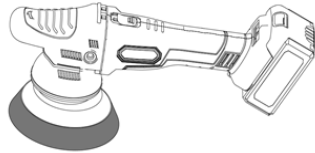


MODEL NO: T-21C

**SAFETY & OPERATING
INSTRUCTION MANUAL**

T-21C

CORDESS DUAL ACTION POLISHER.



SAFETY & OPERATING INSTRUCTION MANUAL

TECHNICAL DATA

TYPE	T-21C DA POLISHER
ORBIT	8/15/21 mm
ABSORBED POWER	400W
ELECTRONIC SPEED CONTROL	YES
ROTATION	3600/4200 RPM
BACKING PLATE FIXING THREAD	M8
PLATE DIAMETER	125mm
BUFFING PAD MAX DIAMETER	150mm
PAD TYPE	HOOK & LOOP FACED
WEIGHT	2.5 Kg (5.5 lbs)

The values shown are based on a nominal voltage of 230V/50Hz. In the case of voltages and frequencies of different power, values may vary. Refer to the label technical specifications to the nominal values of the T-21C Cordless Dual Action Polisher™.

POWER TOOL SAFETY

WARNING: Before using your T-21C, it is critical that you read and understand these safety rules. Failure to follow these rules could result in serious injury to you or damage to the tool.

Good safety practices are a combination of common sense, staying alert and understanding how to use your tool. To avoid mistakes that could cause serious injury, do not plug in your tool until you have read and understood all safety rules.

READ and become familiar with this entire Owner's Manual. LEARN the tool's applications, limitations and possible hazards.

WARNING:

Look for this symbol that identifies important safety precautions. It means **CAUTION! BE ALERT! YOUR SAFETY IS INVOLVED!**

- **KEEP GUARDS IN PLACE** and in working order.
- **ALWAYS WEAR EYE PROTECTION.**
- Any power tool can throw foreign objects into your eyes which could cause permanent eye damage. ALWAYS wear safety goggles (not glasses) that comply with ANSI safety standard Z87.1. Everyday glasses have only impact resistant lenses. They ARE NOT safety glasses.
- **WARNING: Glasses or goggles not in compliance with ANSI Z87.1 could cause serious injury when they break.**

WORK AREA

- **Keep your work area clean and well-lit.** Cluttered benches and dark areas invite accidents.
- **Do not operate power tools in environments where explosive elements, such as flammable liquids, gas or dust are present.** Power tools create sparks which may ignite the dust or fumes.
- **Keep bystanders, children and visitors away while operating the tool.** Distractions can cause you to lose control.

PERSONAL SAFETY

- **Stay alert, watch what you are doing and use common sense when operating a power tool. Do not use the tool while tired or under the influence of drugs, alcohol or medication.** A moment of inattention while operating power tools may result in serious personal injury.
- **Dress properly. Do not wear loose clothing or jewellery. Contain long hair. Keep your hair, clothing and gloves away from moving parts.** Loose clothing, jewellery or long hair can be caught in moving parts.
- **Avoid accidental starting. Be sure power switch is OFF before plugging in.** Carrying tools with your finger on the switch or plugging in tools that have the switch ON invites accidents.
- **Remove adjusting keys or wrenches before turning the tool ON.** A wrench or key that is left attached to a rotating or moving part of the tool may result in personal injury.
- **Do not overreach. Keep proper footing and balance at all times.** Proper footing and balance enables better control of the tool in unexpected situations.
- **Use safety equipment. Always wear eye protection. Dust mask, non-skid safety shoes, hard hat and/or hearing protection must be used in appropriate conditions.**

TOOL USE AND CARE

- **Use clamps or another practical method to secure and support the workpiece on a stable platform.** Holding the work by hand or against your body is unstable, unsafe, and may lead to loss of control.
- **Do not force the tool. Use the correct tool for your application.** The correct tool will do the job better and safer at the rate for which it is designed.
- **Do not use the tool if the power switch does not turn it ON or OFF.** Any tool that cannot be controlled with the switch is dangerous and must be repaired.
- **Disconnect the plug from the power source before making any adjustments, changing accessories or storing the tool.** Such preventative safety measures reduce the risk of the tool starting accidentally.
- **Store idle tools out of reach of children and other untrained persons.** Tools are dangerous in the hands of untrained users.
- **Maintain tools with care.** Keep polishing tools clean.
- **Check for misalignment or binding of moving parts, breakage of parts and any other condition that may affect the tool's operation. If damaged, have the tool serviced before using.** Many accidents are caused by poorly maintained tools.
- **Use only accessories that are recommended by the manufacturer for your model.** Accessories that may be suitable for one tool may become hazardous when used with another tool.

- **Keep the tool and its handle dry, clean and free from oil and grease.** Always use a clean cloth when cleaning. Never use brake fluids, gasoline, petroleum-based products or any strong solvents to clean your tool. Following this rule will reduce the risk of fire, loss of control and deterioration of the plastic components of the tool.

SERVICE

- **Tool service must be performed only by qualified personnel.** Service or maintenance performed by unqualified personnel could result in risk of injury.
- **When servicing a tool, use only identical replacement parts. Follow instructions in the Maintenance section of this manual.** Use of unauthorized parts or failure to follow Maintenance instructions may create a risk of electric shock or injury.

SPECIFIC SAFETY RULES

- **Never allow fingers or clothing to contact the polishing/buffing pads or sandpaper.**
- **Always use two hands to control the polisher to avoid loss of control.**
- **Never submerge the polisher in water or any other liquid.** The tool will be damaged and fire could result.
- **Always wear eye protection** when polishing or sanding.
- **Always wear eye protection and a dust mask** when sanding.

BATTERY & CHARGER SAFETY

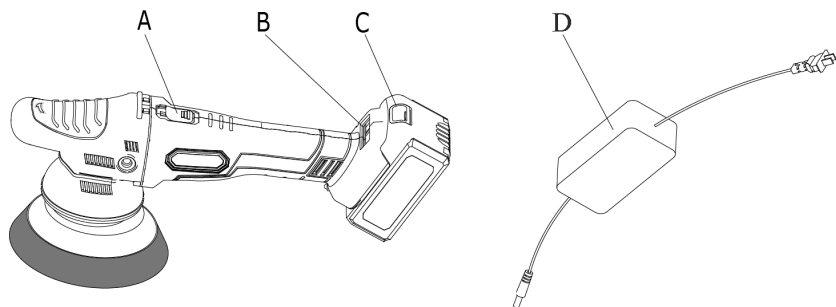
- **Do not store or carry battery pack in a manner in which metal objects could contact exposed metal end.** Do not place battery in aprons, pockets, drawers, etc. with loose nails, screws, keys etc. The battery could short circuit causing a fire, personal injury or damage to the battery.
- **Never attempt to open the battery pack for any reason.** If the housing of the battery breaks or cracks, immediately discontinue use and do not recharge.
- **Do not charge the battery pack if it is wet** or shows any evidence of corrosion.
- **Do not incinerate the battery pack.** It can explode in a fire.
- Minor leakage from the battery pack may occur under extreme usage, charging or temperature conditions. This does not indicate a failure. If, however, the outer seal is broken and this leakage gets on your skin, follow these steps:
 1. Wash immediately with soap and water.
 2. Neutralize with a mild acid such as lemon juice or vinegar.
 3. If liquid gets into your eyes, flush immediately with clean water for a minimum of 10 minutes and seek medical attention.

NOTE: The battery fluid is a 18–35% solution of potassium hydroxide.

- **Do not use an extension cord.** Plug the charger cord directly into an electrical outlet.
- Use the charger only in a standard 110–118 V/60 Hz electrical outlet.

- **WARNING:** The double-insulated charger is equipped with a polarized plug (one blade is wider than the other). This plug will fit into a polarized outlet only one way. If the plug does not fit fully into the outlet, reverse the plug. If it still does not fit, contact a qualified electrician to install a polarized outlet. Do not alter the plug in any way. Double insulation eliminates the need for the three-prong grounded power cord and grounded power supply system.
- **Charge the battery pack only with the charger supplied with the tool.**
- **Do not use the charger in wet or damp conditions.** It is intended for indoor use only. Do not use the charger near sinks or tubs. Do not immerse the charger in water.
- **Do not allow the charger cord to hang over the edge of a table or counter or touch hot surfaces.** The charger should be placed away from sinks and hot surfaces.
- **Do not use charger to charge any batteries other than the polisher/sander battery.** Other batteries may explode.
- **Do not operate charger if cord or plug is damaged.** Replace damaged cord and plug immediately.
- **Do not operate charger if it has received a sharp impact, been dropped or otherwise damaged in any way.** Have a qualified technician examine the charger and repair it if necessary. Do not disassemble the charger.
- For best results, only charge the battery when the temperature range of the battery and work area is between 10–40°C (50–105°F).
- **Unplug the charger when not in use and before cleaning or maintenance.**
- **Do not abuse the cord.** To reduce the risk of damage to the electric cord or plug, never carry the charger by the cord or yank the cord to pull the plug. Always grasp the plug and pull to disconnect. Always keep the cord away from heat, oil and sharp edges.

KNOW YOUR POLISHER



PARTS OF THE TOOL

- A-ON/OFF switch
- B-Speed dial
- C-21V Battery
- D-Charger

Every time you use the polisher you should verify the following:

1. Accessory is firmly installed & centred on the mounting plate
2. Proper eye and breathing protection are being worn.

Failure to adhere to these safety rules can greatly increase the chances of injury.

REMOVING & INSTALLING BATTERY

WARNING: Always make sure your fingers are away from the ON/OFF switch when removing or installing a battery.

1. To remove the battery from the tool, squeeze the locking buttons (C) on the top of the battery.
2. Slide the battery (C) completely out of the tool.
3. Slide the battery fully into the tool handle until you hear the locking latches “clicks” into place.

NOTE: The battery will not fit into the tool if the negative polarity symbols are not aligned. If you encounter difficulty inserting the battery into the tool, check to make sure the negative polarity symbols are aligned.

Gently pull on the battery to ensure it is securely latched into the tool.

CHARGING THE BATTERY

Before beginning any polishing or sanding project, it is important that you fully charge the battery. As it takes 2 to 3 hours to fully charge a rundown battery, it is recommended that the battery be charged the day before being used.

WARNING: Use **ONLY** the 21 Volt charger supplied with this tool to charge the battery. Do not charge any other batteries with the charger supplied with this tool. Mixing incompatible batteries and charger may cause the battery to leak or burst causing personal injury.

BATTERY & CHARGER FACTS

1. The battery supplied with the tool is NOT fully charged when shipped. The battery must be charged for at least 5 hours before being used in the polisher.
2. There are two conditions under which a battery will not accept a full charge:
 - when the battery is new
 - when the battery has not been used for an extended period of time.

These are normal conditions and do not indicate a problem. After about four cycles of charging and discharging through use, the battery will accept a full charge.

USING POLISHER WITH 21V ADAPTOR AND CORD

You can power the polisher with your car battery by using the 21V adaptor and cord instead of using the tool battery.

WARNING: Always remove the battery from the tool while changing accessories.

OPERATING INSTRUCTIONS

WARNING: Remove the battery before carrying out any work on the T-21C.

Before switching on the power tool. Unpack the polisher and check that there are no missing or damaged parts.

NOTE: The batteries are not fully charged on delivery. Prior to initial operation, charge the batteries fully. Refer to the charger operating manual.

Inserting/replacing the battery

- Press the charged battery (C) into the power tool until it clicks into place.
- To remove, press the release button 7 and pull out the battery.

CAUTION! When the device is not in use, protect the battery contacts. Loose metal parts may short-circuit the contacts; explosion and fire hazard!

Battery state of charge

- If the LED light turns green, this indicates that charging is complete. If the LED light is off, the battery is faulty and must be replaced.

Attaching the tools

NOTE: Use original accessories on this model. Not using original accessories may lead to a poor polishing result, increased vibrations and greater wear or even damage to the power tool.

Information concerning foam wear

NOTE: In general, foam wear is much higher in connection with free-wheeling eccentric polishing than with rotational polishing or force driven eccentric polishing.

Due to the drive, this wear does not take place on the outside of the foam but at the foam core instead. The harder/longer the cell structure is subjected to strain and damaged as a result, the faster the build-up of heat. Subsequent damage is inevitable. Wear of this kind cannot be seen on the foam externally. The only reliable action is replacement and disposal in good time to prevent thermal damage to the power tool.

Switching on and off

Brief operation without engaged switch rocker

- Push the switch rocker forwards and engage by pressing the front end.
- To switch off the T-21C, release the switch rocker by pressing the rear end.

Preselecting the speed

- To set the operating speed, press the speed control button (B). Selected speed is maintained even when switching off.
- Gently press the switch to accelerate the T-21C up to the preselected speed.

CAUTION! Risk of injury due to destruction of the tool. Use the appropriate tool for the job.

NOTE: In the event of overload or overheating in nonstop operation, the power tool will switch off. To continue working, switch the T-21C off and back on again.

NOTE: When the T-21C is switched off, the tool continues running briefly. If using a polishing paste, use the respective tool for each paste. Sponges can be washed in the washing machine.

Maintenance and Care

WARNING: Remove the battery before carrying out any work on the T-21C.

Cleaning

- Clean the T-21C and grille in front of the vent slots regularly. Frequency of cleaning is dependent on the material and duration of use.
- Regularly blow out the housing interior and motor with dry compressed air.

DISPOSAL INFORMATION

WARNING! Render redundant power tools unusable: mains operated power tool by removing the power cord, battery operated power tool by removing the battery.



EU countries only

Do not throw electric power tools into the household waste!

In accordance with the European Directive 1812/19/EU on Waste Electrical and Electronic Equipment and transposition into national law used electric power tools must be collected separately and recycled in an environmentally friendly manner.

Device, accessories and packaging should be recycled in an environmentally friendly manner. Plastic parts are identified for recycling according to material type.

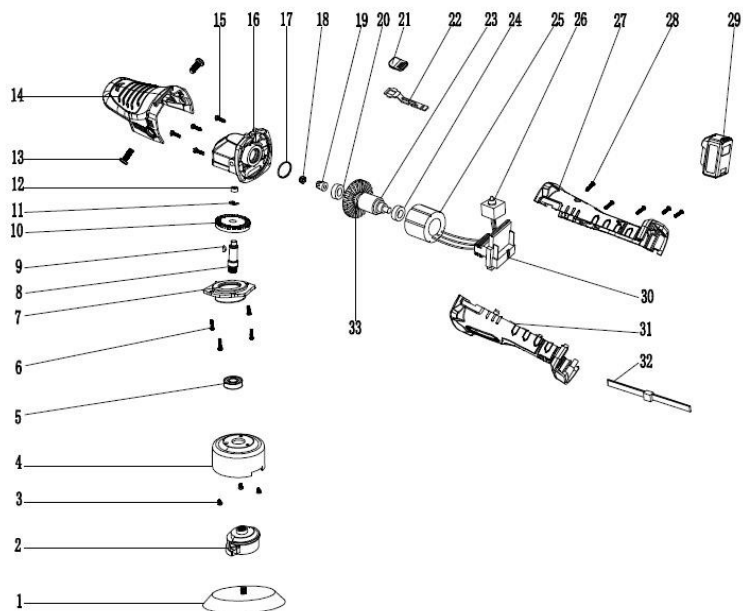
WARNING!

Do not throw batteries into the household waste, fire or water. Do not open used batteries.

EU countries only:

In accordance with Directive 1806/66/EC defective or used batteries must be recycled.

NOTE: Contact your dealer about disposal options!



No.	Description	No.	Description
1	Backing Plate	18	Nut
2	Balancing Weight	19	Gear (Smaller)
3	Screw	20	Bearing
4	Protector	21	Button
5	Bearing	22	Plastic Bar
6	Screw	23	Rotor
7	AL Gear Box (Downside)	24	Bearing
8	Shaft	25	Stator
9	Half-Moon Key	26	Switch
10	Gear(Bigger)	27	Plastic Body
11	Spring Ring	28	Screws
12	Bearing	29	Charge (21V Battery)
13	Screw	30	Flapper
14	Head Cover	31	Plastic Body
15	Screw	32	Rope
16	AL Gear Box (Upper)	33	Fan
17	O-Rubber Ring		

WARRANTY

1 year internal parts, not wearable parts. 90 days for battery. Warranty does not cover neglect or misuse. Warranty starts from the date of sale to the end user.

End user or distributor sends the unit back to Tornador® at the end user/distributor's expense. Include the bill of sale to help with determining the 1 year as well as contact name, phone number and return address. **ALSO INCLUDE A BRIEF DESCRIPTION OF WHAT IS WRONG WITH THE UNIT.**

If covered under warranty, it will be fixed and returned freight prepaid.

If it is not covered under warranty, Tornador® will contact the end user/distributor with an estimate of the repair cost. The end user/distributor is responsible for paying the repair charges if they authorize the unit to be repaired. The unit will also be shipped back at the end user/distributors expense.

Please note that any prior attempt at a repair by the end user or unauthorized repair facility will void the warranty.

Send to: Tornador®
Attn: Vehicle Care Repair Team
11210 Katherine's Crossing
Suite 100
Woodridge, IL 60517

TORNADOR

PROFESSIONAL CLEANING TOOLS

GET THESE OTHER FINE TORNADOR TOOLS!

T-21

DUAL ACTION POLISHER



The Tornador® T-21 Dual Action Polisher® is the perfect tool for all professional detailers that desire the best results.

The T-21 levels, polishes, and finishes automotive paint resulting in that deep gloss and shine without swirling and scratching. Whatever the job is, the T-21 DA Polisher is your answer!



S-100C

CORDLESS HVLP SPRAY GUN

The S-100C uses High-Volume, Low-Pressure (HVLPS) technology to evenly disperse the flow of any liquid with less risk of overspray. The S-100C is designed for the professional detailer and home enthusiast looking to disinfect, sanitize, deodorize, and/or clean any vehicle, without having to worry about cords. The S-100C can also handle viscous products like water-based dressings to make applying dressings easy no matter on the interior or exterior surfaces. Do detail work in less time with the 3 selectable spray patterns: vertical, round, and horizontal. The S-100C is ready to handle whatever the job entails!

T-21C



CORDLESS DUAL ACTION POLISHER

Thank you for the purchase of your new Tornador® T-21C Cordless Dual Action Polisher™. We are very happy to welcome you into the Tornador® family! Thank you for your support!

The Tornador® T-21C Cordless Dual Action Polisher™ is the perfect tool for all professional detailers that desire the best results. The T-21C levels, polishes, and finishes automotive paint resulting in that deep gloss and shine without swirling and scratching. Whatever the job is, the T-21C Cordless DA Polisher is your answer!

Phone: **1-972-380-2906**

Toll Free: **1-844-472-0062**

Fax: **1-972-248-8542**

E-Mail: **info@tornador.us**

For Product Info: **www.tornador.us**

For Ordering Info: **www.tornadortools.com**

For Repair Info: **www.tornador-repairs.com**

Another fine brand by



Serving the automotive industry since 1969
Innovations in chemistry since 1935

Tornador® covered by one or more of the following: U.S. Patent Nos. 8,480,011; 8,690,077; 9,475,071; 10,189,034; 10,343,177; 10,730,062; 10,562,078; Taiwanese Patent No. I617360 and U.S. Design Pat. Appl. Nos. 29/756,918; 29/756,919; 29/756,920; 29/756,921.

T-21C Cordless Dual Action Polisher™ and S100C HVLP Spray Gun™ are trademarks, Tornador® and T-21 Dual Action Polisher® are a registered trademark of ECP Incorporated ©2021