

PROBLEM SOLVER

PROBLEM:

Welding can be difficult for many reasons:

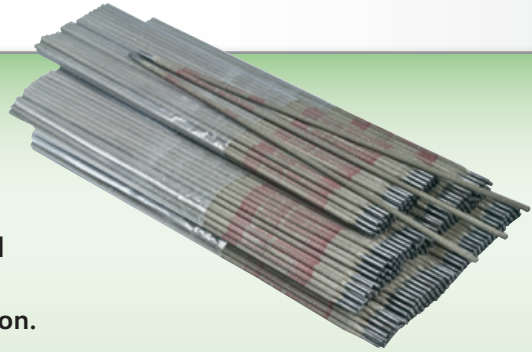
- Repairs can be out of position or in a difficult location, taking a lot of extra time.
- Galvanized steel needs to have its zinc coating removed.
- Low amperage does not have enough power to adequately run some alloys.



SOLUTION:

Cronatron® 338 Premium Carbon Steel Electrodes

- Fast freeze deposition allows welding in overhead and vertical positions.
- Welds through dirt, rust, and grease contamination.
- Produces almost no spatter.
- Resists zinc contamination and welding defects, even when welding on un-prepped galvanized steel.
- Provides a more consistent, stable arc and prevents burn-through.
- Polarity: AC or DC reverse.
- Will operate on any machine, including small buzz boxes.

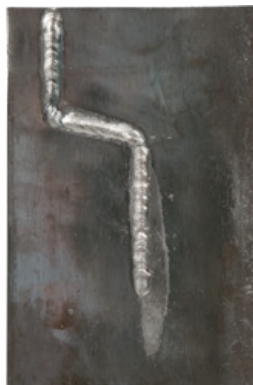


APPLICATIONS:

- Galvanized steels
 - Tanks and containers
 - Automotive parts
- Mild structural steels
- Sheet metals
- Door and window frames

INDUSTRIES:

- Automotive
- Equipment Rental
- Manufacturing



Easy-to-use in nearly any position