

BMW M4 Coupe 2015

Technical Service Bulletin: S1 B51 36 15

Kent material list:

High Tech clear sealer, P10195

(replaces BMW PVC sealer)



SI B51 36 15
Body Equipment

October 2015
Technical Service

Please perform the procedure outlined in this Service Information on all affected vehicles before customer delivery. In the event the customer has already taken delivery of the vehicle, please perform the procedure the next time the vehicle is in the shop.

SUBJECT

Service Action: Repair the PVC seam on the left rear light

MODEL

F82 (M4 Coupe)

SITUATION

The left rear light PVC seam may not have been applied properly and may be leaking.

AFFECTED VEHICLES

This Service Action involves F82 (M4 Coupe) models produced in August 2015.

Vehicles which require this Service Action to be completed will show it as "Open" when checked either in the "Service Menu" of DCSnet (Dealer Communication System) or with the Key Reader.

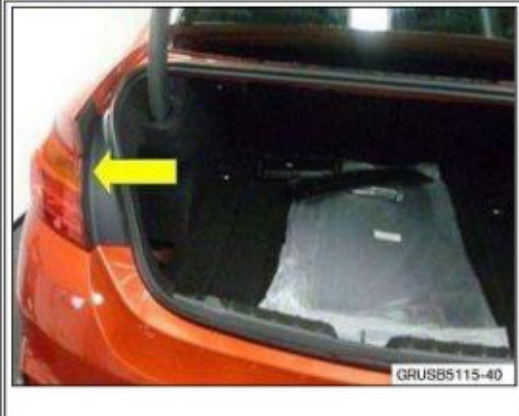
CAUSE

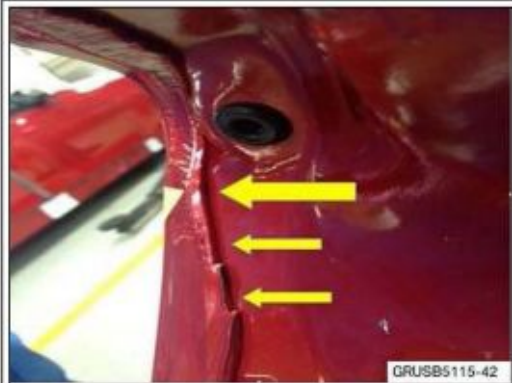
The PVC seam was not applied correctly and can cause water leaks.

CORRECTION

Remove the left tail light and properly apply the PVC sealer.

PROCEDURE

| | |
|---|---|
|  | <ol style="list-style-type: none"> 1. Remove the left tail light. Refer to Repair Instruction REP 63 21 260. |
| | <ol style="list-style-type: none"> 2. Seal the area of the PVC seam that shows waviness or is incomplete. |



3. Do not remove the existing PVC seal and only apply PVC sealer to the wavy area.

4. After the seam sealer has dried, reassemble the vehicle, then check for water leaks into the interior and the control unit recess near the left side.

PARTS INFORMATION

| Part Number | Description | Quantity |
|-----------------|-------------------|-----------|
| 83 42 0 428 349 | Seam sealer 300ml | As needed |

WARRANTY INFORMATION

Reimbursement for this Service Action will be via normal claim entry utilizing the following information:

| | |
|---------------------|----------------|
| Defect Code: | 00 51 79 03 00 |
|---------------------|----------------|

Completion "before" vehicle delivery to the customer or the vehicle is already in the workshop

| | | |
|-------------------------|-------------------------|---------------------|
| Labor Operation: | Labor Allowance: | Description: |
|-------------------------|-------------------------|---------------------|

| | | |
|-----------|-------|--|
| 00 63 794 | 7 FRU | Repair PVC seam, check for water leaks and dry if needed (Plus work) |
|-----------|-------|--|

Or:

Completion after vehicle delivery to the customer

| Labor Operation: | Labor Allowance: | Description: |
|------------------|------------------|--|
| 00 63 145 | 8 FRU | Repair PVC seam, check for water leaks and dry if needed (Main work) |

And:

Sublet – Bulk Materials

| | | |
|---------------|--|---|
| Sublet Code 4 | See sublet reimbursement calculation below | Reimbursement for the repair-related bulk material (PN 83 42 0 428 349 – Seam sealer. Please, do not use part numbers for claim submission) |
|---------------|--|---|

Sublet reimbursement calculation for claiming the used quantities of repair-related bulk material (83 42 0 428 349) is at dealer net plus handling.

Enter this material cost in sublet and itemize the amount in the claim comment section.

[Copyright ©2015 BMW of North America, Inc.]