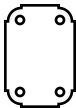


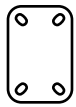


## Industrial Casters NEW

- Swivel casters feature durable, heat-treated, factory-lubricated double ball raceways for high performance
- Swivel casters include a side pinch brake
- Delrin® bearings on all wheels are durable, corrosion-resistant, and require infrequent or no lubrication
- Corrosion-resistant zinc plating
- 5/16" dia. nut and bolt axle on 3"
- 3/8" dia. nut and bolt axle on 4", 5", and 6"
- Applications include industrial, office and retail carts, dollies, stands, cabinets, racks, and other mobile equipment



3" Top Plate Dimensions  
 Overall Size: 2-3/4" x 3-3/4"  
 Hole Spacing: 1-3/4" x 3"  
 Hole Dia.: 11/32"  
 Bolt Dia.: 5/16"



4", 5", and 6" Top Plate Dimensions  
 Overall Size: 3-1/8" x 4-1/8"  
 Hole Spacing: 1-3/4" x 3" to 2-3/8" x 3-3/8"  
 Hole Size: 3/8" x 3/4" slots  
 Bolt Dia.: 5/16"



Soft Rubber Swivel



Soft Rubber Rigid



Polyurethane Swivel



Polyurethane Rigid



Polypropylene Swivel



Polypropylene Rigid

Wheel Dia. (Inches)	Wheel Width (Inches)	Load Rating (Lb.)	Overall Height (Inches)	Wheel Type	Swivel Item No.	Pkg. Qty.	Rigid Item No.	Pkg. Qty.
3	1-1/4	125	3-3/4	Soft Rubber	<b>1588620</b>	1	<b>1588621</b>	1
	1-1/4	210	3-3/4	Polyurethane	<b>1588622</b>	1	<b>1588623</b>	1
4	1-3/8	200	5-1/16	Soft Rubber	<b>1588624</b>	1	<b>1588625</b>	1
	1-3/8	375	5-1/16	Polypropylene	<b>1588626</b>	1	<b>1588627</b>	1
	1-1/2	375	5-1/16	Polyurethane	<b>1588628</b>	1	<b>1588629</b>	1
5	1-3/8	240	6-1/16	Soft Rubber	<b>1588630</b>	1	<b>1588631</b>	1
	1-3/8	400	6-1/16	Polypropylene	<b>1588632</b>	1	<b>1588633</b>	1
	1-1/2	400	6-1/16	Polyurethane	<b>1588634</b>	1	<b>1588635</b>	1
6	1-3/8	280	7-1/16	Soft Rubber	<b>1588636</b>	1	<b>1588637</b>	1
	1-3/8	400	7-1/16	Polypropylene	<b>1588638</b>	1	<b>1588639</b>	1
	1-1/2	400	7-1/16	Polyurethane	<b>1588640</b>	1	<b>1588641</b>	1

### Wheel Types



#### Soft Rubber

This all-rubber wheel has a soft rubber tread integrally molded and bonded to a hard rubber core. It provides a cushioned ride and quiet operation. Tread hardness: 70 to 85 Shore A.



#### Polyurethane

This basic hard tread wheel has a polyurethane tread molded and mechanically locked to a polypropylene plastic hub. It offers excellent floor protection and abrasion resistance, rolling ease, quiet operation and resistance to water, acids, oil and most chemicals. Tread hardness: 50 to 60 Shore D.



#### Polypropylene

These wheels are made of a polypropylene compound that is an excellent, multi-application performer. These wheels exhibit superior resistance to abrasion, compression set, acids, oils, grease and impact. They provide easy rolling and good floor protection. Tread hardness: 75 to 85 Shore D.